

**Project 1**  
**Sea of Tears**



Oil Painting by Mo in 22, Nov 4

There is a special gland that can exit carbon dioxide to swell the umbrella. When the jellyfish encounters an enemy or encounters a big storm, it will automatically release the air and sink to the bottom of the sea. After the sea calms down, it takes a few minutes to produce gas to make it rise and float. Jellyfish, or jellyfish, if people swim with it when swimming in the sea, the thorn cells in the jellyfish's body will release small thorns.

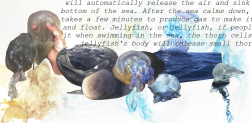


still has the same meaning, we are all in the same boat.

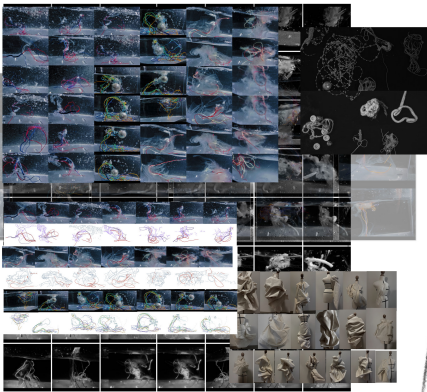
**Jellyfish and Marine Pollution**  
The Sea of Tear collection is a stunning tribute to the ethereal movement of jellyfish and the metaphorical significance of marine pollution. With 98% of jellyfish consisting of water, they are a true embodiment of the tears of the sea. The collection draws inspiration from the fluid, flowing movement of jellyfish, with fabrics and silhouettes that reflect their weightlessness. Also highlights the impact of mask pollution on marine life that depict images of sea creatures being entangled in discarded masks and other waste.



Some people will have a strong allergic reaction to these thorns, causing death, which is a way for him to protect himself. Printed animals with strong life regeneration. Some tentacles can be up to 20 meters to 30 meters long, and the water content in the body can generally reach more than 95%. It is composed of two internal and external embryos. There is a thick sodium glue layer between the two layers, which is not only transparent, but also has a floating effect. When they move, they use the water spray in their bodies to reflect forward, just like a round umbrella floating in the water.



[Dissolution  
Process]



[Silhouettes  
Discovery 1.0]



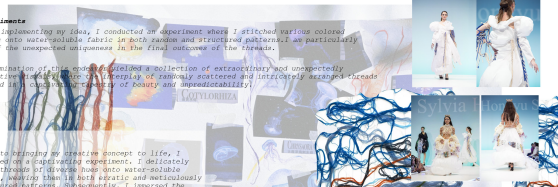


### Water Soluble fabric Experiments

Before implementing my idea, I conducted an experiment where I stitched various colored threads onto water-soluble fabric in both random and structured patterns. I was particularly fond of the unexpected uniqueness in the final outcomes of the threads.

The culmination of this endeavor yielded a collection of extraordinary and unexpectedly distinctive visuals. It was the interplay of randomly scattered and intricately arranged threads that resulted in a captivating tapestry of beauty and unpredictability.

Prior to bringing my creative concept to life, I embarked on a captivating experiment. I delicately sewed threads of diverse hues onto water-soluble fabric, weaving them in both erratic and meticulously structured patterns. Subsequently, I immersed the fabric in a water-filled vessel, meticulously observing the mesmerizing process of dissolution while capturing its ethereal evolution through the lens of my camera.



Developers according Graduation Project





Photographer : Jonny  
Model: Julia  
Makeup: Nina  
Designer: Hongyu Shi

LOOK BOOK





**Under The Sexy**

*body long wig*



Male in Baroque Era

long hair as male power

*Wig*



Female in Victorian Era

loose hair as "seductive"

'Lovely Long Wig'

*long Wig*  
"No allowed to be disheveled, otherwise it will be seen as seducing men."

*Seductive*

*Male power*

*Allowed to be disheveled. Otherwise it will be seen as seducing men.*

Artist Research: Carlota Guerrero



Research on Victorian Era Clothing

*No Allowed to be disheveled. Otherwise it will be seen as seducing men.*



The ethereal quality of the lace-like fabrics and the timeless allure of pearls intertwined seamlessly in my wig collage, creating a visual tapestry that pays homage to the intricate elegance of a bygone era.

'Hair Tie'

'Hair Knit'

Sample and Research Combine Collage

In my exploration of wig collage, I sought to evoke a particular ambiance by blending elements reminiscent of the Victorian era.



Invite my friends to be models and explore the endless possibilities of hair.

Sketches



I delved into the intricate connection between hair and the female form, drawing inspiration from the Baroque era's penchant for elaborate male wigs.



I delved into the intricate connection between hair and female form.

My artistic exploration led on a journey as I...



Handwritten notes in red ink: "1. Add a post in the center", "2. Add a thin strip of fabric to post", "3. Add a thin strip of fabric to post", "4. Add a thin strip of fabric to post".



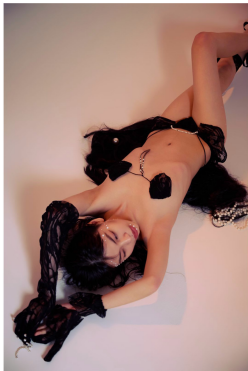
Handwritten notes in red ink: "1. Add a thin strip of fabric to post", "2. Add a thin strip of fabric to post", "3. Add a thin strip of fabric to post".

Line up



LOOK BOOK

Photographer:  
Victoria  
Model: Emma  
Makeup: Weiwei Wu  
Designer: Hongyu  
Shi





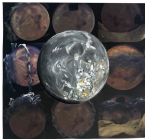
*An Energy Portrait: Ordinary Stars*



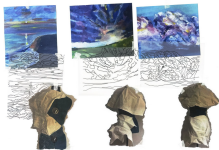
The moon on the day I was born.



When there is birth, there is death. I start to wondering where the future and dead goes.



The assumption of death and future maybe the horizon line; the other side of the world, the other world.



Seaming fabrics according to the lines.



Tracing the assumption line.



Human and aerolite: the energy becomes aerolite and crushed on human.



Thinking process: The energy after death would come back to the universe.



Combine pattern with silhouettes



Me and my friends



Inner self refers to the aerolite.



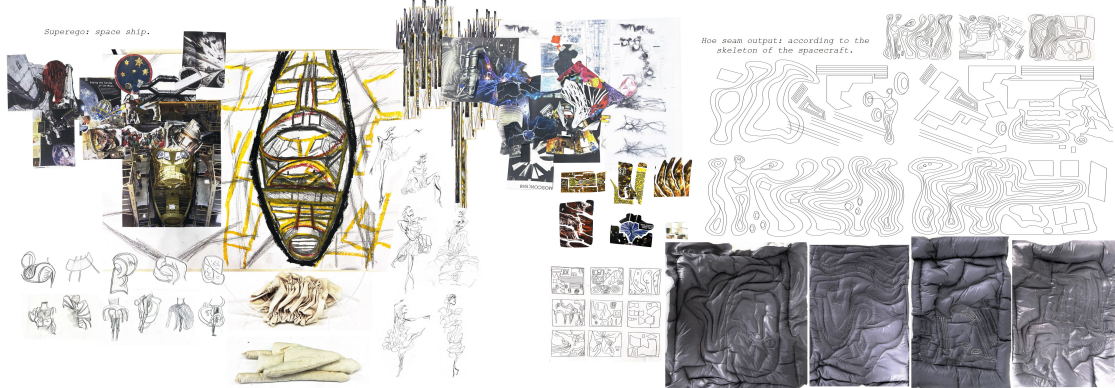
Self, trying to break the bridge by tentacles.



There are different energy levels of individuals, the inner self, self and superego.



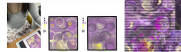
Superego: space ship.



Inner self experiment



Self-painting according to the moon



Line up



Sketch



Fitting



LOOK BOOK

Photographer : Ning Lee

Model: Faith

Makeup: Nina

Designer: Hongyu Shi







**Working: Surreal dreamweaver**

**Inspiration**

People have different dreams every night. Is there a profession called dream architect who can change the things and endings they experience in their dreams when they sleep?

In the story of Snow White, the witch was ordered by the queen to poison her, but the witch may not want to do so. Although we can't change this ending in the real world, we can try different endings in dreams. Helping people change their dreams need to travel through time and space to complete this work. Through this project, we will design work clothes for dream builders.

**Draping and sketches**

**Development**

People who can shuttle through dreams have witch-like abilities. From the outside, they are very imposing, with pointed wizard hats and long cloaks.

Try to use the silhouette of the hat to help increase momentum. The hat is also one of the artefacts of wizard casting.

I extracted the folded structure of the clothes wrapped on the sculpture of Hypnos.



## Development 2

When traveling through different people's dreams, the wormhole can help me quickly shuttle through different time and space.



Theoretically, the wormhole is a space tunnel connecting two distant time and space, like a whirlpool in the sea, which is ubiquitous but fleeting. These space-time vortices are caused by the rotation of stars and gravitational action. Just as a whirlpool can make the local water surface closer to the bottom of the water, it can make two relatively distant local spaces get closer in an instant. However, some people assume that a strange substance can keep the wormhole open, while others hypothesize that if there is a strange substance called Phantom matter, because it has both positive energy and negative mass, it can create a rejection effect to prevent the wormhole from closing.

### Sketches



### Wormhole structure draping



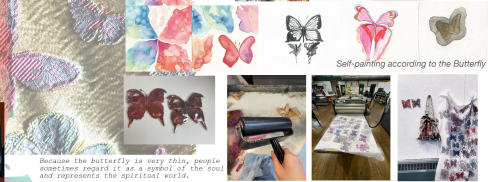
## Fabric Output

Dream channels are colourful. In different regions of the universe, the intersection of light and matter of different wavelengths will produce rich and diverse visual effects. For example, a bright accretion disk may be formed around the supermassive black hole in the centre of the galaxy, and different frequencies of light are intertwined, showing gorgeous colours. The supernova remnants produced by the star explosion emit strong X-rays and electromagnetic radiation, making the surrounding space appear dazzling. In addition, the so-called interstellar matter in interstellar dust will also scatter and absorb light, producing different colours and textures.

## Development 3

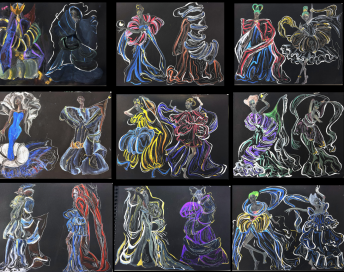


### Self-painting according to the Butterfly



Because the butterfly is very thin, people sometimes regard it as a symbol of the soul and represents the spiritual world.

Line up



Color Pallet



Fitting



Photographer : Ning Lee  
 Model: Daisy&Faith  
 Makeup: Nina  
 Designer: Hongyu Shi





**Boundless Confinement**

## Inspiration

Throughout the cyber violence incidents in recent years, a large number of insults, defanation, human flesh search, incitement to war, malicious marketing hype, promotion and drainage and other behaviours have made cyberspace hostile. The perpetrators, the marketing accounts of the hype, the network water army, the inaction network platforms, etc. are deeply hated by the public.

With the popularization and development of digital technology and traffic economy, the network violence from "fan circle culture" supplemented by "human flesh search" and other online black and gray production has gradually expanded to different platforms and circles, and even extended from online to offline. The current development of cyber violence has made many people start to worry that everyone may become the target of cyber violence.

I Don't Hate Me

4. 我网上骂别人，你叫司马东四

5. 我小时候被为DICKRIP子让我有点害怕

6. 我刚刚给你妈打电话，结果你猜怎么着，你妈挂了



One thing everyone does is not to call you bullying. When you stand up to answer questions, whispering is bullying, ridicule is bullying, ignoring is bullying, making you feel uncomfortable is bullying.

Joanna Piotrowska

Frantic

Frantic collects black-and-white photos taken by Piotrowska in Lisbon, London, Warsaw and Rio de Janeiro since 2016. The series records a temporary shelter established by people in their own places of residence, and explores the concept of family and the vulnerability of the field of residence.

The original idea of the project came from common children's games - building shelters, tents, bunkers or houses in your family space. Piotrowska transferred this kind of children's game to the adult world, interested in what triggered adults build this protective temporary shelter, as if the family itself could not provide protection from outside influences.



## Experiment



Through the process of visualizing cyber violence to complete first-hand research, the outside fabric is like the anonymity of the network, covering up the appearance of the perpetrator itself.



The profile formed by extracting the shape of the action and developing the large action is parallelization experiments to develop the detailed structure.



Silhouette sketches

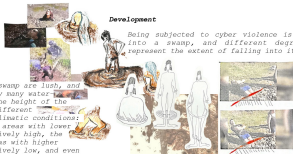




The plants in the swamp are lush, and there are generally many water-loving plants. The height of the grass depends on different geographical and climatic conditions: the swamp grass in areas with lower latitudes is relatively high, the swamp grass in areas with higher latitudes is relatively low, and even most of them are moss. One obvious feature is that their roots are often thick. In addition, there are many kinds of animals living in the swamp, forming different types of biomes.



### Development



Being subjected to cyber violence is like falling into a swamp, and different degrees of harm represent the extent of falling into it.

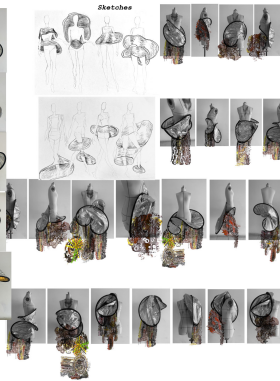
When falling into the swamp, we should try our best to expand the contact area between our body and the quagmire. If there are clothes, take them off and lay them flat on the swamp. Be careful not to make too much movement in the process, and then let yourself float on the sand in a flat position. At this time, you can wait for the rescue or crawl slowly, depending on the situation. In the process of crawling, you should also slowly move one foot and one hand to maintain the contact area of your body and the quagmire at all times.



### Experiment



### Sketches



### Development



The body manipulated by lifting wires from above or by thin wires tied to the controller. In a simple puppet, there is a rope at the bottom of the legs, hands, shoulders and ears, and the bottom of the spine. Some puppets can imitate almost all the movements of people and animals. This type of puppet was not fully developed until the mid-19th century, but the original moveable puppets manipulated by iron rods instead of strings still remain in Sicily and other places. The puppet opera performed according to the works of famous composers was extremely popular in the 18th century.

The head of the puppet is carved from casphor wood or finely textured willow. There is an organ device in the head, which can be controlled by lifting the line to move the mouth, eyes, nose and tongue. The thick and lower tip of my neck, combined with the cage abdomen, can swing and twist at will, make head movements such as lowering and raising the head, leaning left and right.

### Draping



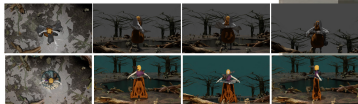
### Sketches







Line Up



3D modeling



Video Link:

<https://www.hallosy.com/hongyu-sylvia-video-for-applications/>